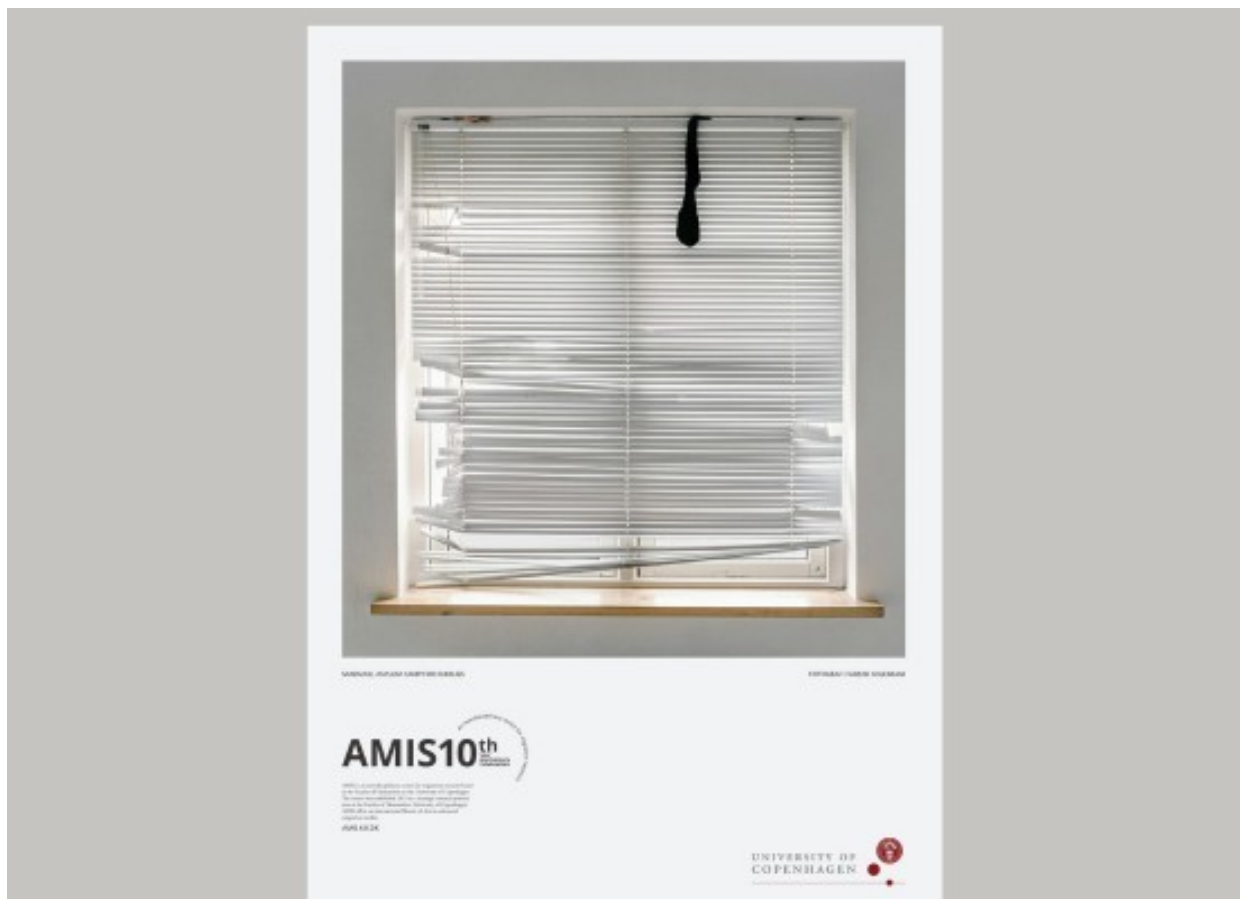




# AMIS Newsletter

Centre for Advanced Migration Studies

---



*Photographer: Farzad Soleimani. The photo is from Sandvad Asylum Camp for Families.*

## **AMIS Newsletter Autumn 2023**

**Dear colleagues and friends,**

This fall we are marking the 10th anniversary of our interdisciplinary Master of Arts in Advanced Migration Studies which was the first of its kind at the University of Copenhagen. Since 2014 the Faculty of Humanities has accepted students from all over the world to embark on the advanced study of migration for a 2-year period. Our study program is attractive: Our 40 international students are selected from the 300 applications that we receive each year.

It was on the initiative of the then dean at the Faculty of Humanities, Prof. Ulf Hedetoft, and Prof. of philosophy, Nils Holtug, that AMIS was established 2013 as a research center and a strategic priority area of the Faculty of Humanities, focusing on both research and education. Since 2019, the research center has been part of the Saxo Institute, who was already hosting the MA program. Since then, AMIS has entered a consolidation phase with a strengthened research focus on the qualitative study of moving populations and mobility practices, as well as irregularized and forced migration.

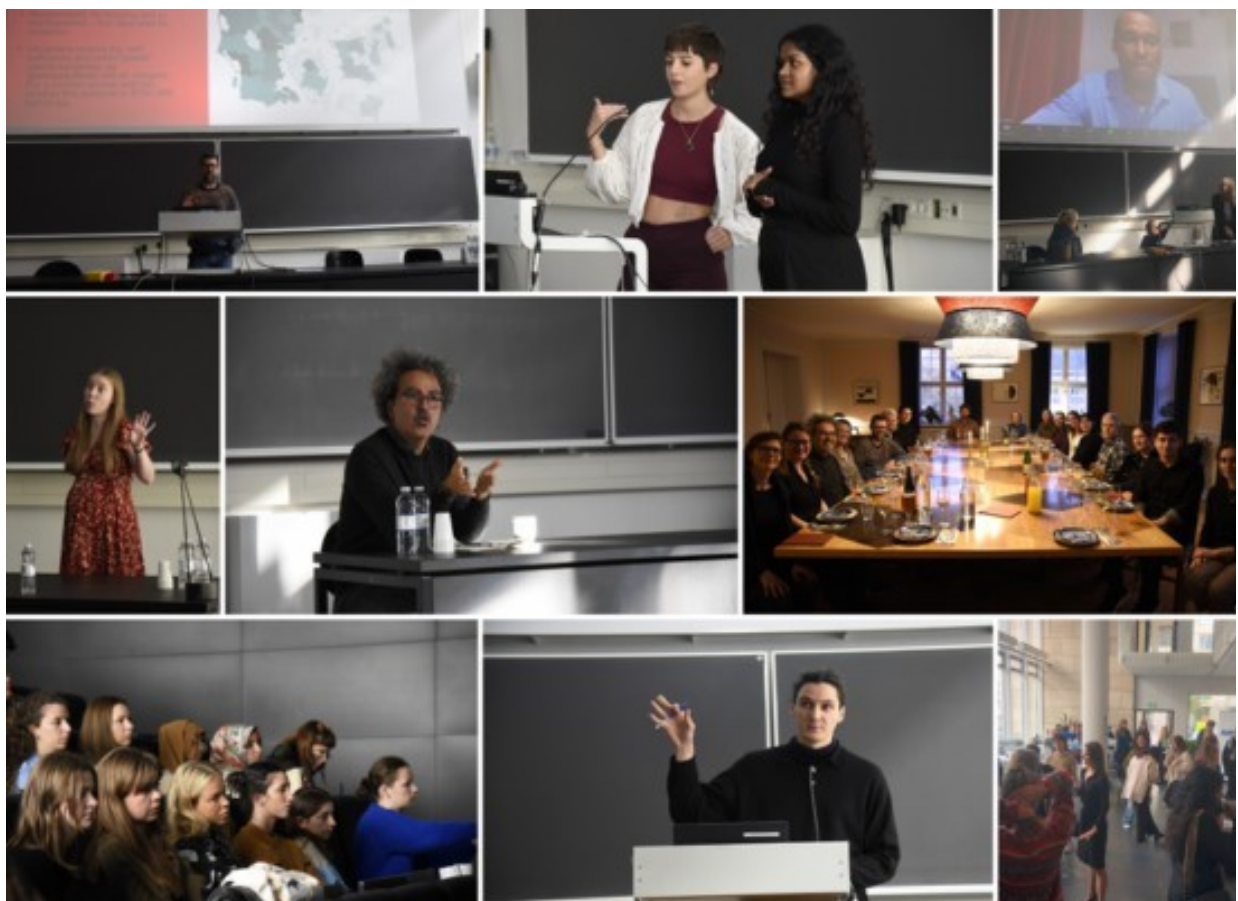
AMIS' research aims to challenge usual understandings of migration as being exceptional, something new, and as inflicted with crisis. We do so by advancing approaches that focus on the everyday life practices of migrants, the historical continuities of migration processes, and on migrants' agency. At the core of AMIS' work is thus an ongoing critical and self-reflexive assessment of the exceptionality,

irregularity, and historicity of categories such as "refugee" and "migrant", in effect broadening the scope of migration research to incorporate the many ways of being on the move in precarious life situations. [You can read more on AMIS research here.](#)

**Thank you** for joining us on the celebration seminar on Oct 12th at University of Copenhagen! We were happy to welcome Associate Dean for Research and Impact, Dorthe Gert Simonsen, and Head of the Saxo Institute, Casper Sylvest. It was indeed a very successful and festive day with great presentations on AMIS research, AMIS students and visiting scholars' projects, AMIS alumni experiences, and not least an inspiring talk by prof. Nando Sigona, University of Birmingham.

Above, you can see the birthday poster made especially for this event. Photographer is Farzad Soleimani and the photo is from Sandvad Asylum Camp for Families.

Yours sincerely  
Marie Sandberg, AMIS director



*AMIS 10 Anniversary Celebration. Photographers: Maria Frantzoulis and Dosol Nissi Lee.*

## **AMIS impact**

---



### **New podcast series from the Boundary Work Project: Den Store Modtagelse**

In a new podcast series in four episodes, the Boundary Work research team sheds light on how volunteers, caseworkers and Syrian refugees in three Danish municipalities experienced the great reception of the Ukrainian refugees in 2022. The podcast examines how the paradigm shift towards temporary protection and return shapes the lives of Syrian refugees in Denmark, explains the legal and social conditions of possibility for the differential treatment of the Ukrainians, and show the ambivalence and frustration this created among Syrian refugees and the integration caseworkers and social volunteers receiving them. The podcast is in Danish and can be accessed in Apple podcasts, at the University of Copenhagen homepage or where you usually listen to podcasts. [Listen to the podcast.](#)

### **New research paper**

AMIS postdoc Katrine Syppli Kohl has a new article in the December issue of the Nordic Journal of Migration Research (Volume 13, issue 4), titled "Disturbing Intimacies: the pathopolitical governance of mixed-status families in times of return". The article treats issues of deportability, invisibilisation and separation of families by Danish immigration control based on data and insights from the 2017-2020 Carceral Mobilities Project (CAMP), and the 2021-2024 Boundary Work Project.

### **Den Store Danske Encyklopædi – lex.dk**

AMIS postdoc Katrine Syppli Kohl rewrote the entry on boat refugees. [Check it out.](#)

### **Article in the Arts Special Issue 'Arts and Refugees: Multidisciplinary Perspectives (Vol. 2)' published by AMIS graduates**

Recent AMIS graduates Stella Grace Conard and Elena Horton have published an article in the Arts Special Issue 'Arts and Refugees: Multidisciplinary Perspectives (Vol. 2)'. The article, developed from their work in the AMIS Migration and Societies module, sets out to understand how art projects have come to be included under integration agendas. Using a Denmark-based crafting group as a case study, the article highlights social recognition as a magnifier of the socio-political context in

which integration initiatives are situated and provides a nuanced perspective on the relationship between refugees and the arts, widely considered a 'positive thing'. [See article.](#)

## AMIS research



The Boundary Work research team Ditte Shapiro, Rikke Egaa Jørgensen, Katrine Syppli Kohl and Marie Sandberg (PI) provided a total of four chapters for a new book (in Danish) on the consequences of the paradigm shift towards temporary protection and return in Danish immigration and integration legislation. The chapter "[Frivillighedens Grænsearbejde: Hvordan paradigmeskiftet udfordrer den frivillige sociale indsats på flygtningeområdet](#)" demonstrates how volunteers deal with the challenges of pauperisation, temporariness and uncertainty using four different tactics of boundary work. The book *Paradigmeskiftets Konsekvenser: Flygtninge, Stat og Civilsamfund* received a very positive review at [Altinget.dk](#) (rating 5 out of 6). [See the review.](#)

The book is edited by Mikkel Rytter, Sarah-Louise J. Mortensen, Susanne Bregnbæk and AMIS' own Zachary Whyte, is open access and can be downloaded free of charge at the homepage of Aarhus Universitetsforlag. [Read more.](#)

## AMIS events

---

## AMIS-MIM student conference

On December 8th, AMIS will be organising the yearly AMIS-MIM student conference. This year the theme is Imaging Mobilities – Mobile Imaginaries and it will take place at the University of Copenhagen, South Campus. The conference offers a world premiere of the documentary movie 'Ganbanaaxum Fedde: a contemporary, transnational antislavery network' by Lotte Pelckmans, AMIS associate professor.

The AMIS calendar will be updated shortly with more information about the event.

## AMIS visiting scholars



### Magdalena Bogucewicz

is a doctoral candidate enrolled at the Faculty of Political Science and Journalism situated within Adam Mickiewicz University in Poznań. Her scholarly pursuits are centered around the intricate nexus of political and humanitarian dimensions inherent in contemporary migration crises in the Mediterranean, Balkans, and Central European regions.

The focal point of her ongoing research endeavors resides in the comprehensive examination of the ramifications of dual standards present within the asylum policy framework of Poland, and how these standards impinge upon the operational dynamics of humanitarian organizations.

Furthermore, her research delves into the analysis of the extent to which asylum policies can either obstruct or facilitate humanitarian action in contexts that are marked by high levels of politicization.

In the course of her 3 months stay at AMIS, Magdalena seeks to enhance her existing analytical perspective by becoming acquainted with the Scandinavian framework of asylum laws and policies.



### Nina Carlsson

is visiting researcher at AMIS from August to December 2023. Her postdoctoral project (funded by the Swedish Research Council 2023-2025) investigates the implications of language and civic knowledge testing in Denmark, Finland, and Sweden. It studies their implementation on multiple levels: from pre-immigration to recruitment, residency, and citizenship/naturalization. The project is based at the [Institute of Housing and Urban Research \(IBF\)](#), Uppsala University, with extended visiting stays at AMIS and the Migration Institute of Finland. Her other current research deals with the far right, deportability, repatriation, and national minorities.

She holds a PhD in Political Science from Södertörn University, with a dissertation investigating the in/exclusion of national minorities and Indigenous peoples from immigrant integration policies in Europe. She has previously been a visiting scholar at the Department of Political Studies, Queen's University, ON, Canada, and the Swedish Research Institute in Istanbul, and has held pre-doctoral fellowships at the Department of Political Science, University of Vienna, and at the University of Graz.

**Rebecka Söderberg**

is a PhD student in IMER at Malmö University, who had a research stay at AMIS from October 2022 to January 2023. Her PhD project explores residents' experiences of and reactions to interventions for social mix. During her stay, she wrote a photo essay for Urban Matters Journal, based on photos taken by children in Mjølnerparken. The photo essay highlights how children live under a condition of evictability and are deprived of their homeplace even before relocation, as their favourite places are either removed or made (too) difficult to access. [See essay](#).

Furthermore, she wrote an article called 'Multiscalar Un-homing: Residents' Experiences of Interventions for Social Mix', which is in production and will be available shortly in [Nordic Journal of Migration Research](#).

---

**AMIS academic intern**





Dosol Nissi Lee is a master's student at the Centre for Advanced Migration Studies (AMIS) at the University of Copenhagen, Denmark. As an academic intern at AMIS, Nissi actively supports Lotte Pelckmans' research projects on slavery and witchcraft in West Africa within the framework of the action research program, Slavery and Forced Migration in Western Mali (SlaFMig), and she also co-reviews manuscripts for the Nordic Journal of African Studies (ISSN 1459-9465).

Nissi's research interests encompass a wide range of topics in peace and mobility studies, and her research projects have been presented at multiple Danish, Nordic, and international academic workshops and conferences under the themes of migration, disaster, development, international relations, and politics. Currently, Nissi is conducting thesis and independent research projects on subjects including future cities in Asia, land rights in Africa, and post-adoption services in Europe, in addition to her academic internship project related to digital humanities and interactive documentaries.

**amisan—**  
the alumni network of the Centre for Advanced Migration Studies





